

SCHAFERWOOD

BEYOND RECLAIMED. *REINVENTED.*



BIG CABIN





STYLE WITHOUT SACRIFICE

If your architect could invent a method that provided wood products for your home with just the right amount of aging, it would look like this.

The SchaferWood™ process starts with helping you customize a full materials package, including structural timbers/logs, interior paneling, case/base, flooring, exterior siding and trim, all in your preferred colors and textures, and in sizes beyond what mainstream suppliers can offer.

We then sustainably harvest the highest grade, large residual logs, and custom cut each piece for your order (leaving nothing to waste).

The wood acquires its beautifully aged appearance through a proprietary process that combines heavy double brushing/hewing, charring, and finish coloring with organic, water-based materials.

Finally, we deliver the complete package to your site when you need it—never too early or late.

Timeless. Antique. Accurate. Intelligent. This is SchaferWood.

SCHAFERWOOD APPLICATIONS

BISONBOARD™

Our beautiful 3x10 hewn planks are supported by the log or timber superstructure. They serve not only as the structural support for insulation panels but contribute toward a more elegant ceiling finish inside your home.

FASCIA

Western red cedar fascia pieces are pre-cut up to 45 feet in length, eliminating splices. Thickness planing on the backside provides exacting tolerances and faster installation. Full thicknesses are maintained to provide heavy shadow lines for a commanding look. Expertly dried, textured, and colored to capture your style.

TIMBERS/RAFTERS/DECK JOISTS/POSTS/RAILING

Full size, custom cut, and kiln-dried to order. You select the exact species, grade, texture, and finish color to complement your additional SchaferWood materials. Certified grading and timber frame joinery available.

INTERIOR PANELING & TRIM

Rustic, yet so highly finished you can literally feel the texture. Wide, random, wall planks with matching base and case trim materials will arrive in exact quantities and make an immediate impression on your project.

FLOORING

SchaferWood flooring's natural look and character is developed through an ancient, Japanese, charring technique. The process provides a case hardening effect, significantly increasing the wood's durability.

SIDING

Our inventory of large residual logs allows us to produce SchaferWood siding in sizes beyond what other companies can offer. We offer widths of 10" - 14" (versus 4" - 8"), thicknesses from 1" - 5" and beyond, and endless combinations of long lengths, gorgeous patterns, textures, and finishes.

AND MUCH MORE

Give us a call to discuss how SchaferWood could be used for other wood products in your home.



FASCIA



BISONBOARD



TIMBERS / RAFTERS /
DECK JOISTS / POSTS /
RAILING

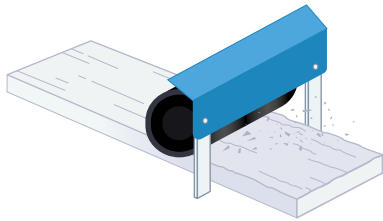


SIDING



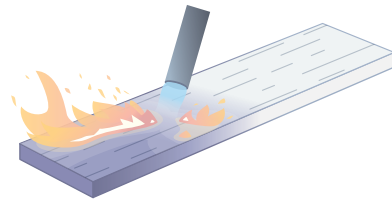
THE SCHAFERWOOD PROCESS

HEAVY BRUSHING



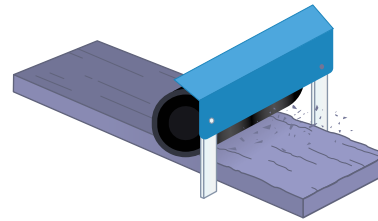
Rough brushing removes the soft springwood between the annual growth rings, as well as other loose materials providing a clean, raised grain surface in preparation for charring.

CHARRING



Each piece is methodically charred using Shou Sugi Ban, an 18th-century process developed in Japan. Moisture is drawn out by the high-intensity flame, while case hardening preserves and protects the wood.

FINISH BRUSHING



Finish brushing loosens the excess char, removes splinters/fuzz, and smooths the texture, leaving the deep and blackened weathered woodgrain. This step gives each SchaferWood piece a distinct, beautiful, and timeless appearance.

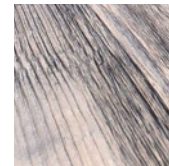
COLORIZING



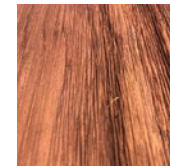
The finishing step is a proprietary 3-phase coloring process using organic materials. See our standard colors below or request a custom color blended just for you. Materials may also be ordered "raw" or unfinished.

STANDARD COLORS

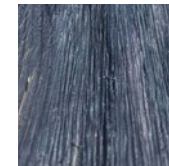
Requests for custom colors are warmly received.



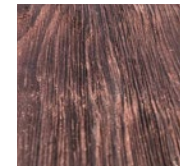
ANVIL GRAY



ATLAS BRONZE



AMARO CHARCOAL



ALTAI BROWN





SIGNIFICANT SCHEDULING & COST ADVANTAGE

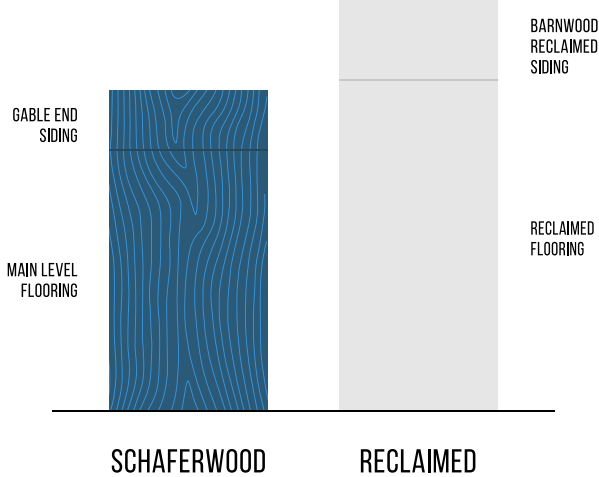
While the warm look of reclaimed wood is great, it is known within the industry to be highly inconsistent, and inherently unpredictable in availability, sizing, and pricing. This leads to higher material and labor costs while also lengthening construction timelines. SchaferWood is designed to fit. Order individual pieces or a complete, custom materials package for a timeless, antique look.

A CASE STUDY

24%

SAVINGS IN MATERIALS

In 2020, we carefully analyzed one of our own real-world log home projects ("The Ouray House") to objectively compare the cost difference of using SchaferWood, versus reclaimed lumber, when constructing the finished wood flooring and gable end exterior siding. SchaferWood amounted to a 24% savings in raw materials, and significant time savings on-site.



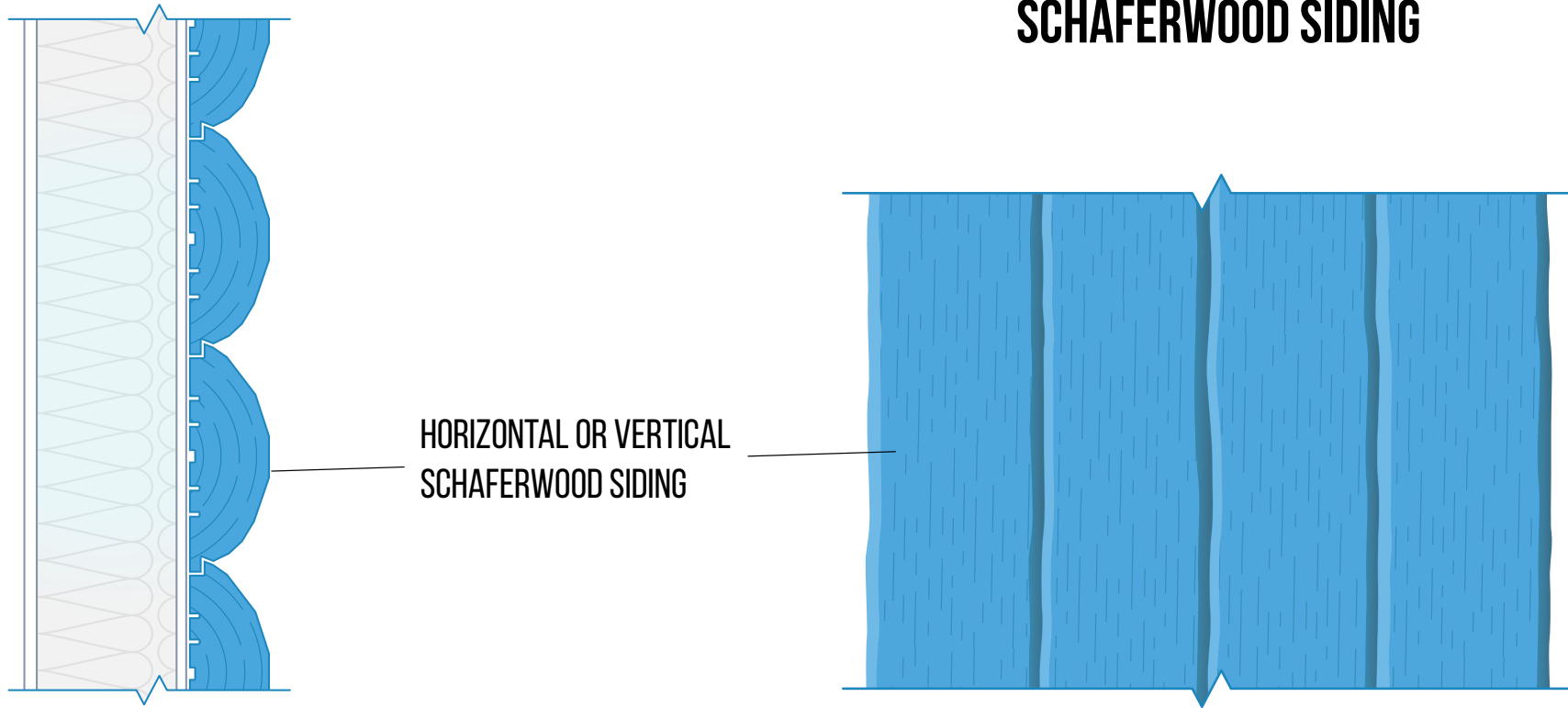


ANY SIZE. FITS ALL.

SchaferWood will meet any design and engineering criteria, helping you to finish your project on time and on budget. With reliable deliveries directly to your site, custom cut pieces, and no minimum order quantities, SchaferWood offers unbeatable value to your project.




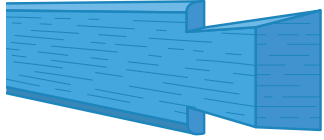



	SCHAFERWOOD	RECLAIMED
Guaranteed availability	✓	✗
Predictable pricing	✓	✗
Predictable delivery	✓	✗
No quantity constraints	✓	✗
Graded timbers/logs	✓	✗
No sizing constraints	✓	✗
Pre-finished & matching materials	✓	✗
Color flexibility	4 color options custom colors possible	✗
Texture options	100% customizable	✗

SCHAFERWOOD SIDING



MATERIAL	Idaho White Pine	Inland Douglas Fir / Western Larch	Inland Western Red Cedar	
DIMENSION*	Thickness Range Vary per Profile	Width Range Vary per Profile	Coverage Vary per Width	Length: 6' - 16'
GRADE	No. 2 Grade	Appearance Grade		
COLOR	Anvil Gray Atlas Bronze Altai Brown Amaro Charcoal	Raw Unstained	Custom Stain	
TEXTURE	Brushed	Smooth	Hewn	

AVAILABLE PROFILES

PROFILE	SIZE RANGE*	TYPE	LINE
	1 1/4" - 5" 7 1/4" - 14"	shiplap	Pendelton
	2" - 5" 10" - 14"	T&G	Fraser
	2" - 5" 10" - 14"	T&G faux chink	Fraser
	1 1/2" - 5" 10" - 14"	authentic dovetails; corners w/ chink	Appalachian
	1 1/2" - 5" 10" - 14"	chink	Vintage
	8", 10", 12", 14"	full scribe	Bridger
	8", 10", 12", 14"	chink	Bridger

*Requests for custom sizes and materials warmly received



PO Box 1029
Coeur d'Alene, Idaho 83816
(208) 683-1444

13526 Hwy 55
McCall, Idaho 83638
(208) 634-0055

info@bigcabin.com
www.bigcabin.com